



CSHL in the News

**The New York Times**  
[Gene therapy with a difference](#)  
 September 23, 2013

**Counsel & Heal**  
[Targeting cancer cells and environment halts tumor growth](#)  
 September 23, 2013

**LIBN**  
[Q&A: Teri Willey, Cold Spring Harbor Lab](#)  
 September 16, 2013

**Newsday**  
[LI's first magnet STEM school opens in Syosset](#)  
 September 11, 2013

**Xconomy**  
[Cold Spring hires former VC to lead "proactive" tech transfer effort](#)  
 September 10, 2013

**Newsday**  
[Execs hired to commercialize LI science discoveries](#)  
 September 9, 2013



CSHL wins top performance awards for our electronic newsletter

In Quotes...

Assistant Professor [Mike Schatz](#) on Genome Web's [In Sequence](#)  
[PacBio CEO Says Roche Deal Validates Technology, Will Lead to Improvements for Research Customers](#)  
 September 30, 2013

Upcoming Events

[3rd Annual Shop for a Cause Fundraiser at Emily Sky Fashions](#)  
 Thursday, October 3

[10th Annual Diane Emdin Sachs Memorial Walk for Lung Cancer Research](#)  
 Saturday, October 5

[Public Lecture: Oil palm and the rainforest - Genome sequencing for sustainability](#) with [Prof. Rob Martienssen](#)  
 Monday, October 7

[Science Walking Tour](#)  
 Saturday, October 19  
 Saturday, October 26

[Panera Bread Pink Ribbon Bagels@ campaign to support LI breast cancer organizations](#)  
 October 1-31

CSHL Annual Report



Now Available Online



Harbor Transcript iPad app



Available Now!

Stay Connected



Founded in 1890, Cold Spring Harbor Laboratory (CSHL) has shaped contemporary biomedical research and education with programs in cancer, neuroscience, plant biology and quantitative biology. CSHL is ranked number one in the world by Thomson Reuters for impact of its research in molecular biology and genetics. The Laboratory has been home to eight Nobel Prize winners. Today, CSHL's multidisciplinary scientific community is more than 600 researchers and technicians strong and its Meetings & Courses program hosts more than 12,000 scientists from around the world each year to its Long Island campus and its China center. Tens of thousands more benefit from the research, reviews, and ideas published in journals and books distributed internationally by CSHL Press. The Laboratory's education arm also includes a graduate school and programs for undergraduates as well as middle and high school students and teachers. CSHL is a private, not-for-profit institution on the north shore of Long Island. For more information, visit [www.cshl.edu](http://www.cshl.edu).

Support National Breast Cancer Awareness Month

The fight against **breast cancer**, which last year claimed the lives of 40,000 American women, is being waged on many fronts. **CSHL scientists** are dedicated to discovering root causes, finding better treatments and developing new drugs. We thank members of the CSHL community who join thousands of other Americans in recognizing National Breast Cancer Awareness Month.



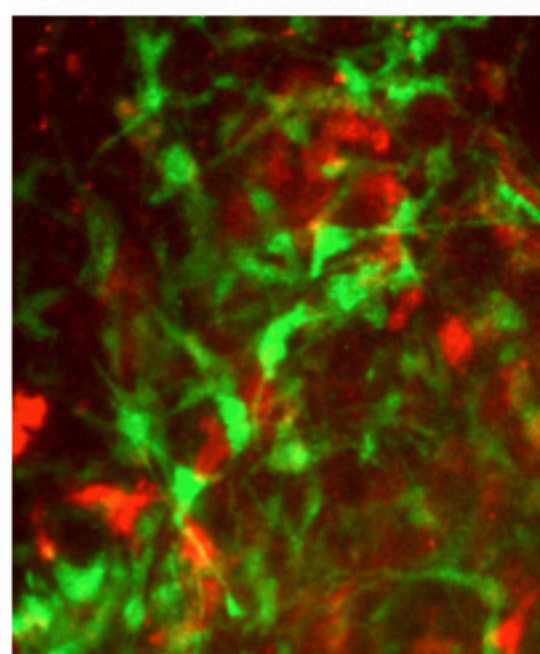
It was a friend of the Lab, the late Evelyn Lauder, a winner of the Double Helix Medal [watch video], who established the pink ribbon as the campaign's symbol. Recently, CSHL and 15 other local breast cancer organizations received donations from the 2013 Long Island 2 Day Walk to Fight Breast Cancer. The numbers were powerful: nearly 400 walkers, just as many volunteers, and \$550,000 raised! We thank you sincerely for your check of \$22,500 in support of CSHL breast cancer research.



Panera Bread is again partnering with WALK for Women's Breast Cancer Fund to raise money for local breast cancer prevention, education, research and support groups. The annual Pink Ribbon Bagel campaign, in its 12th year, has raised over \$130,000 for organizations here on Long Island. Buy your pink bagels starting today!

Research Roundup: Cancer, SMA

Assistant Professor **Mikala Egelbad** and Associate Professor **Scott Powers** have published a **paper** describing signaling between breast cancer cells and one of many cell types in the tumor environment. Different signals had different impacts: one contributed to cancer cell survival, another to proliferation, a third to inflammation and growth of local blood vessels. Dr. Egelbad says we're likely to make "much better progress at fighting cancer by targeting multiple interactions between tumors and their local environment." **Read more.**



Intermingling within a breast cancer tumor are normal cells called fibroblasts (green) and cancer cells (red)

Professor **Adrian Krainer** has led a team of scientists to develop the first mouse model for adult-onset spinal muscular atrophy (SMA). The motor-neuron disease, which is the leading genetic cause of childhood mortality, can also cause progressive weakening in adults. The new mouse model offers researchers an opportunity to make detailed studies of how SMA advances in adult patients. **Read more.** Meanwhile, Dr. Krainer's collaborators at Isis Pharmaceuticals **have just reported** encouraging progress in Phase 1 trials for an antisense SMA drug.

Teri Willey leads CSHL commercialization efforts

The Laboratory is translating discoveries from the lab bench to the global marketplace. Teri F. Willey takes on a newly created position at CSHL: VP, Business Development. The former head of technology transfer at Mt. Sinai Medical Center, she brings an impressive record of success in venture capital and research commercialization. Ms. Willey will have responsibility for the Laboratory's activities in patenting, licensing, company start-ups, and corporate partnerships and collaborations. **Read more.**



A DNA Learning Center is dedicated at Notre Dame University

CSHL's DNA Learning Center (DNALC) has been helping students, teachers and families thrive in the genome age for 25 years. Online and through partnerships, DNALC programs have spread across the country and around the globe. On Saturday, September 28th, the **University of Notre Dame**, under a licensing agreement with CSHL, **dedicated** its new Notre Dame DNA Learning Center. DNALC Executive Director **David Micklos** took part in the ceremony. **Read more.**



Local support for research

Professor **Nick Tonks** and postdoc Nava Krishnan accepted a check for \$6100 from members of the Masthead Cove Yacht Club, in support of cancer research. The Club's annual August race has raised over \$50,000 in memory of Carol Marcincuk, who died of ovarian cancer in 2004. **Full story.**



Grad student Debjani Pal and Associate Professor **Raffaella Sordella** accepted a check for \$15,000 to support Sordella's research in honor of Elizabeth R. Woods, longtime CSHL Association member, who died of non-small cell lung cancer in 2000. **Full story.**

