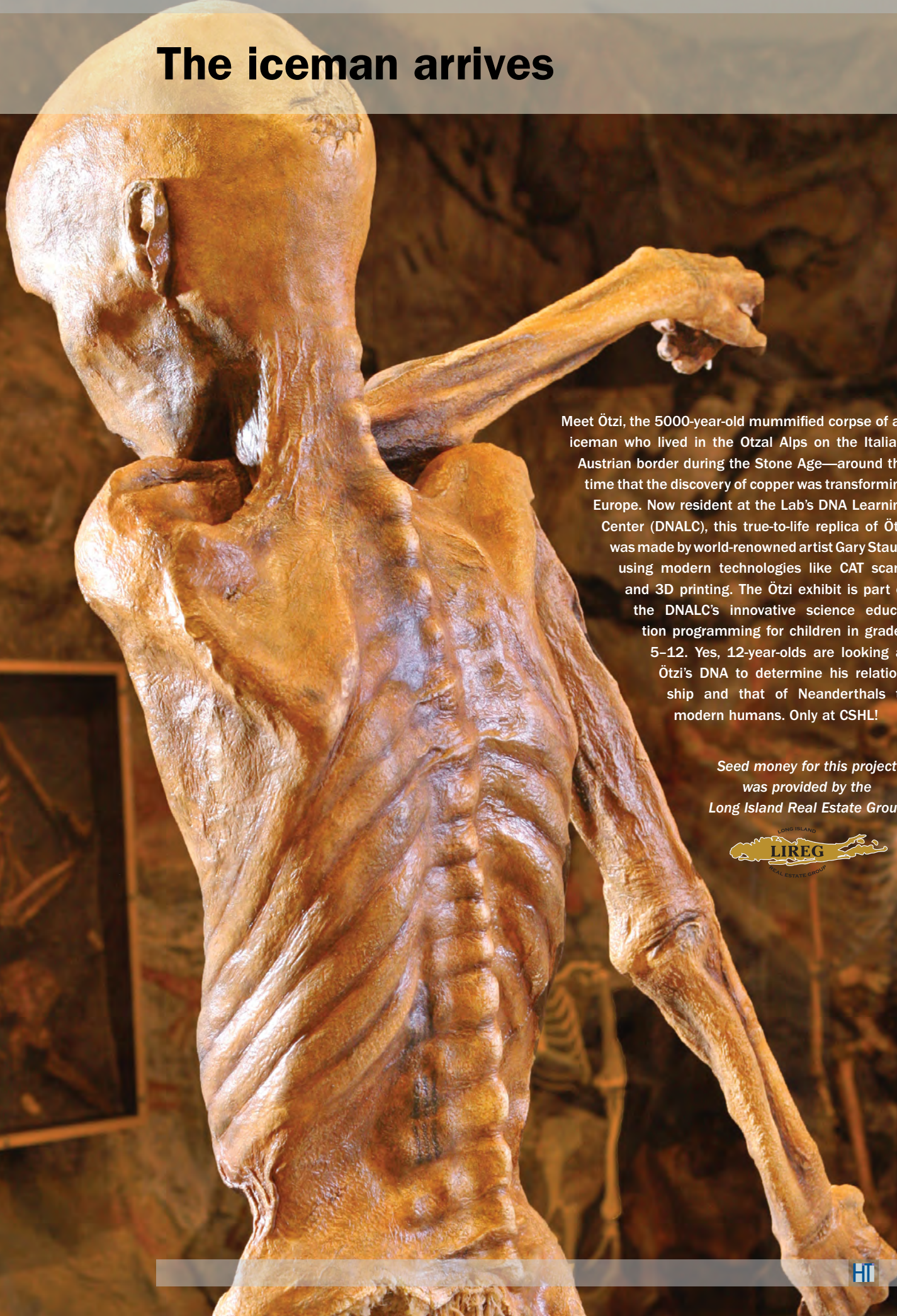


The iceman arrives



Meet Ötzi, the 5000-year-old mummified corpse of an iceman who lived in the Otzal Alps on the Italian-Austrian border during the Stone Age—around the time that the discovery of copper was transforming Europe. Now resident at the Lab's DNA Learning Center (DNALC), this true-to-life replica of Ötzi was made by world-renowned artist Gary Staub, using modern technologies like CAT scans and 3D printing. The Ötzi exhibit is part of the DNALC's innovative science education programming for children in grades 5–12. Yes, 12-year-olds are looking at Ötzi's DNA to determine his relationship and that of Neanderthals to modern humans. Only at CSHL!

*Seed money for this project
was provided by the
Long Island Real Estate Group*

