

**Key cancer protector has an "Achilles' heel"**

Our bodies, fortunately, employ a number of protectors against cancer. A protein called PTEN is one of the strongest checks against prostate and lung cancers, but like Achilles of Greek mythology, it is not without weakness. Research from Associate Professor Lloyd Trotman has identified a PTEN "Achilles' heel," and hopes to use this knowledge to improve treatment of patients.

[More](#)

**In the news**



High-resolution genomic DNA copy number analysis of 125 congenital heart disease family trios  
February 23, 2016

**FierceBiotech**

Cold Spring Harbor scientists discover protein driver of prostate, lung cancer  
February 13, 2017



CSHL's Krainer fixes a protein and saves young lives  
February 11, 2017



The Colony: The history of American eugenics  
February 7, 2017



Trump's Immigration and Travel Ban Causes Confusion, Disruption in Genomics Community  
February 1, 2017



Plants' Epigenetic Secrets  
February 1, 2017



High Schoolers Have High Hopes for Saving Corals  
January 30, 2016

**The Children's Heart Foundation gives \$50K to support genomic studies of congenital heart disease families**



[More](#)

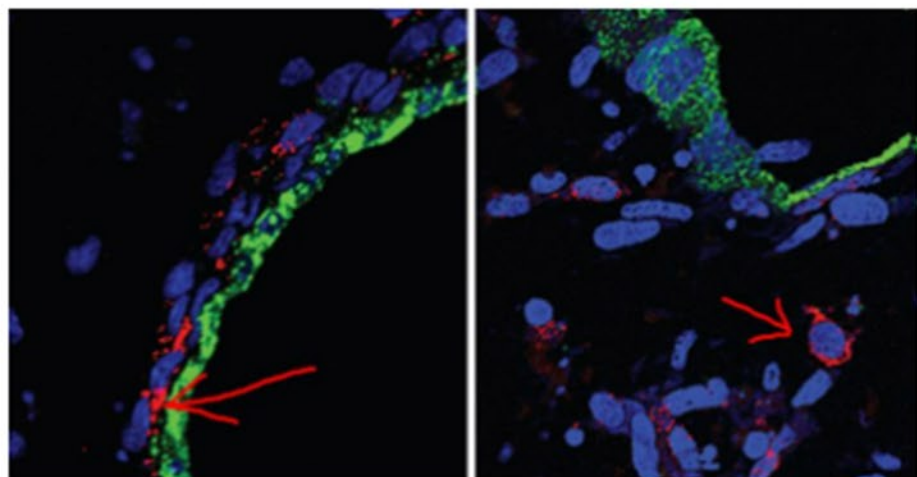
**In quotes**

Assistant Director of the DNA Learning Center Amanda McBrien in Danbury (CT) News-Times:



When school's out, many campuses play host to summer camps

February 7, 2017



**A cancer like an "oatmeal raisin cookie"**

Pancreatic cancer is like an oatmeal-raisin cookie, according to Professor David Tuveson, where the cancer cells are raisins. Just as oatmeal makes up most of the cookie, non-cancerous cells make up most of the tumor. With support from the Lustgarten Foundation, Tuveson's team found new cell subtypes within the "oatmeal," a discovery that his team is using to develop more targeted treatments.

[More](#)



**Molecules and a mission: Base Pairs podcast season 1**

Just four simple DNA "letters"--the molecules that make up the base pairs of the double helix--are enough to convey the complex instructions for life. Our *Base Pairs* podcast breaks down CSHL science into simpler terms so that non-experts can find joy in brain mapping, cancer research breakthroughs, and more. Listen to season 1, and stay tuned for a "Dark Matter of the Genome" episode on March 15, the kick-off for season 2!

[More](#)

**Further reading**

- \* CSHL statement regarding Executive Order on border security and immigration
- \* Glen Cove CARES donates \$7,000 to breast cancer research at CSHL

**TONIGHT: "Green energy" and good drinks**



Join us for a "Green Energy" edition of Cocktails & Chromosomes featuring plant scientist Rob Martienssen

**Upcoming events**

- |   |   |
|---|---|
| <p><b>Mar 1</b><br/>Cocktails &amp; Chromosomes<br/>Plant scientist Rob Martienssen on biofuels</p> | <p><b>Mar 11, 17, 29</b><br/>DNA Learning Center<br/>Otzi the Iceman tour</p> |
| <p><b>Mar 11</b><br/>DNA Learning Center<br/>Saturday DNA: Driving Evolution</p>                    | <p><b>Mar 19</b><br/>Science Walking Tour</p>                                 |



You can help make a difference

