



Tomato trait tussle settled at last

Many of the tomatoes you've eaten likely had two traits that don't get along: one that farmers favored just after the last ice age, and one discovered decades ago in a Campbell Soup Company field. These clashing traits have limited tomato yield, but Zachary Lippman's team reports a way to overcome this and similar barriers.

[More](#)

In the news

POPULAR SCIENCE

Scientists tweaked natural mutations to create a better tomato
May 19, 2017

U.S. News & World Report

National laboratory receives \$15 million for molecular study
May 19, 2017

nature

Fixing the tomato: CRISPR edits correct plant-breeding snafu
May 18, 2017

Science

Twice the tomatoes on the vine, thanks to a bit of genetic tweaking
May 18, 2017

Newsday

What's in the \$1 trillion federal spending plan for LI?
May 3, 2017

nature

Seven days: the week in science
May 3, 2017

Hanging with Heroes & Friends Who Care raise over \$17K for CSHL's breast cancer research



[More](#)

In quotes

Vice President for Development Charles Prizzi in *Newsday*:



NY gives \$15 million for cryo-electron microscope at Brookhaven lab

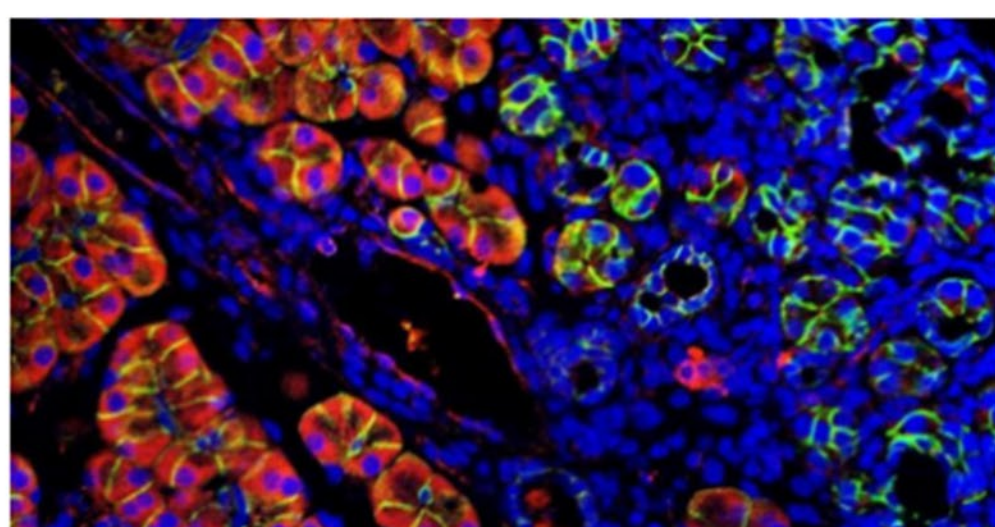
May 18, 2017



Laureate's advice: "You get knocked down; you get up again"

Quoting the British band Chumbawamba, Nobel laureate and honorary degree recipient Carol Greider reminded this year's eight Watson School of Biological Sciences graduates that, "I get knocked down, but I get up again" -- citing many examples from her career.

[More](#)



Pancreatic cancer clues found within the genome's "dark matter"

Most cancer research has focused on the 2% of the human genome that contains genes. Pancreatic cancer research from David Tuveson's lab reveals previously hidden potential causes based on mutations in some of the other 98%, sometimes called the genome's "dark matter."

[More](#)

Further reading

- * [CSHL's Dr. Leemor Joshua-Tor is elected to The National Academy of Sciences](#)
- * [CSHL to lead international team developing next-generation organoid cancer research models](#)

From the LabDish blog



Expert explains: Is confidence measurable?

Upcoming events

- June 10**
Open House
For science enthusiasts of all ages!
- June 14**
Public Lecture
Reconstructing Ancient Human History from DNA
- June 17**
Science Walking Tour



You can help make a difference

